

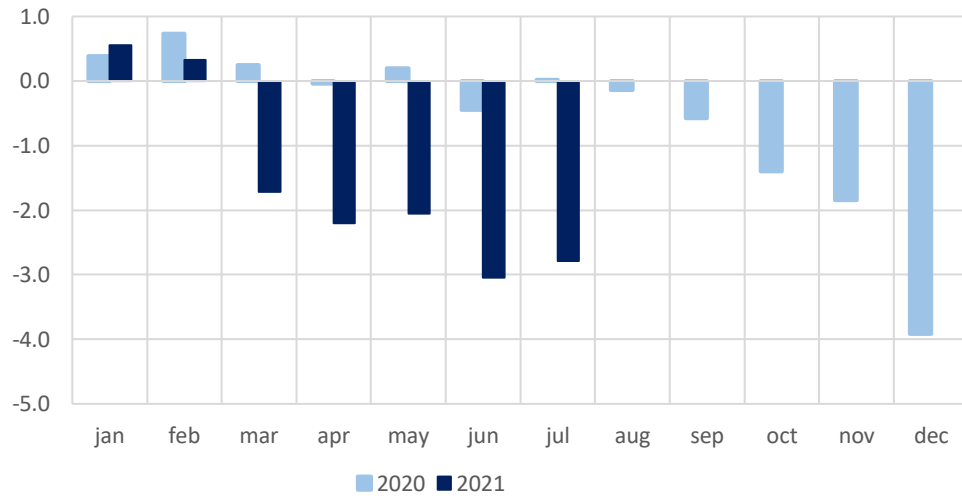
Summary of the budget balances

January 2020 – July 2021, % of GDP

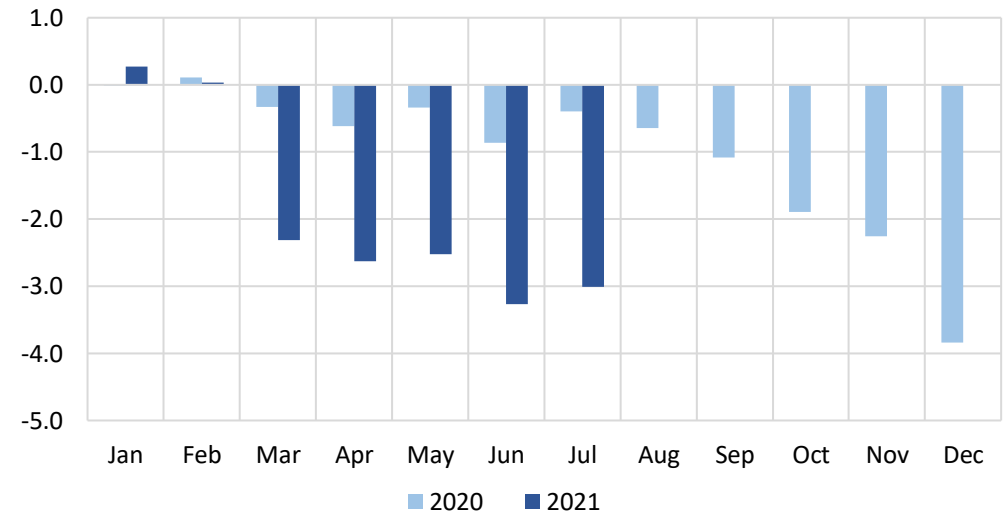
Source: State Treasury

Note: Due to the launch of the SRS unified tax account, taxes for January-July 2021 are grouped by balances incompletely, so the separate basic, special and local government budget data currently are not representative

Government consolidated budget balance (cash flow), % of GDP,
cummulative values, end-of-period



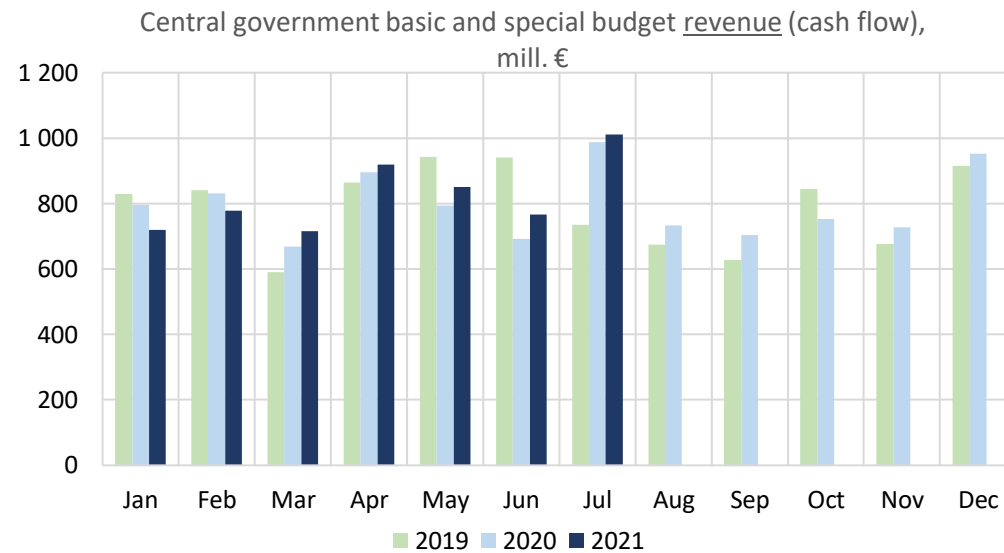
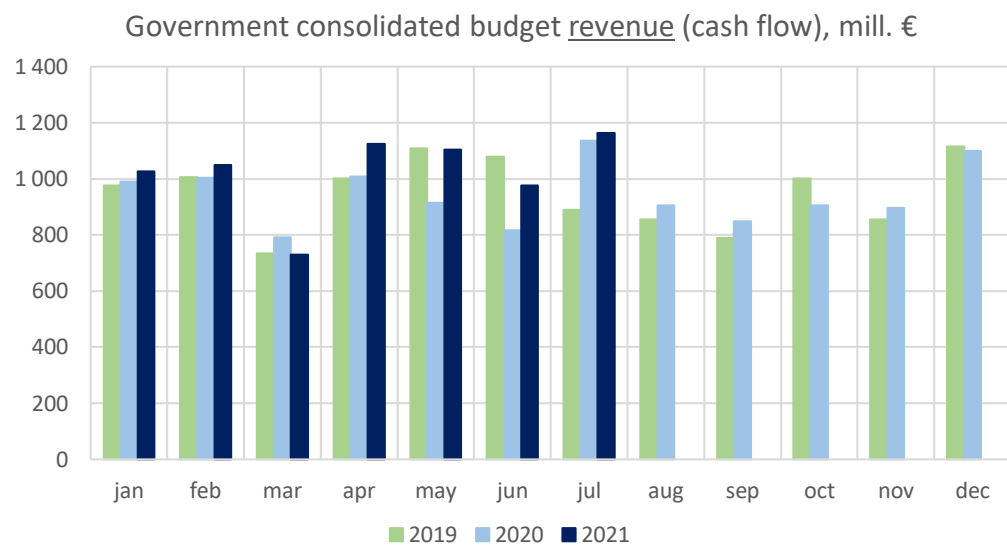
Central government basic and special budget balance (cash flow), %
of GDP, *cummulative values, end-of-period*



Summary of budget revenues (monthly data)

January 2019 – July 2021, million euro

Source: State Treasury

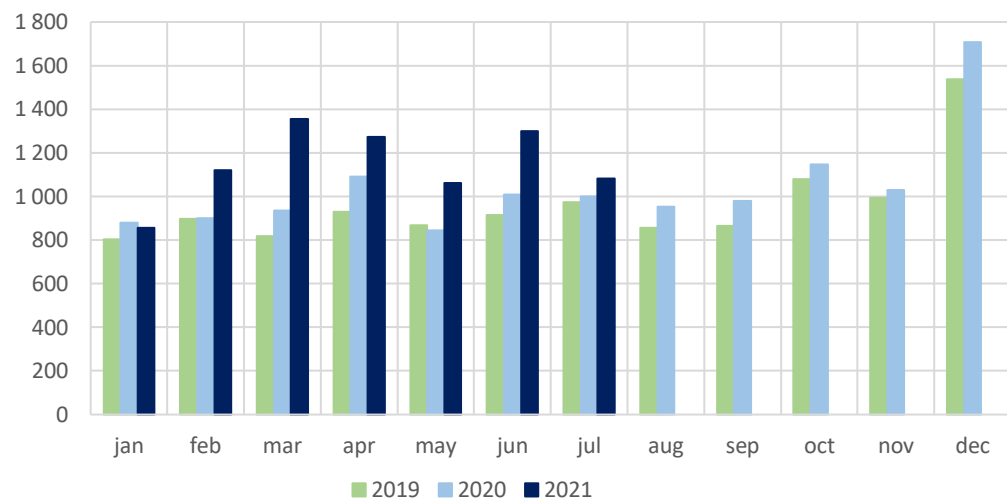


Summary of budget expenditure (monthly data)

January 2019 – July 2021, million euro

Source: State Treasury

Government consolidated budget expenditure (cash flow), mill. €



Central government basic and special budget expenditure (cash flow), mill. €

