

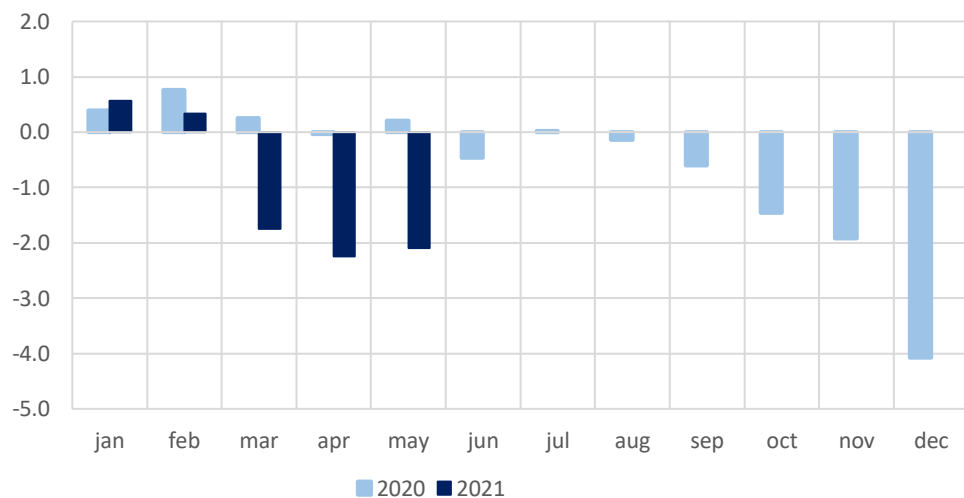
## Summary of the budget balances

January 2020 – May 2021, % of GDP

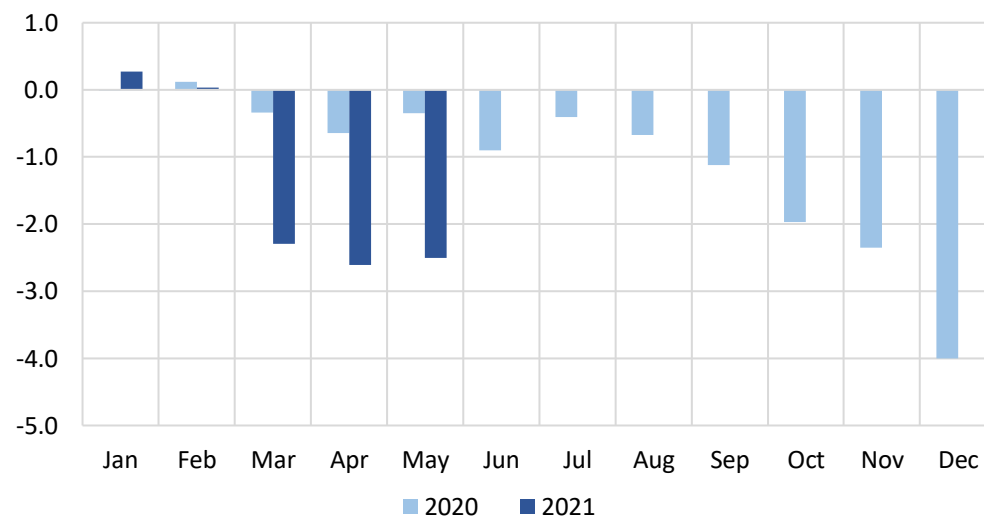
Source: State Treasury

Note: Due to the launch of the SRS unified tax account, taxes for January-May 2021 are grouped by balances incompletely, so the separate basic, special and local government budget data currently are not representative

Government consolidated budget balance (cash flow), % of GDP,  
*cumulative values, end-of-period*



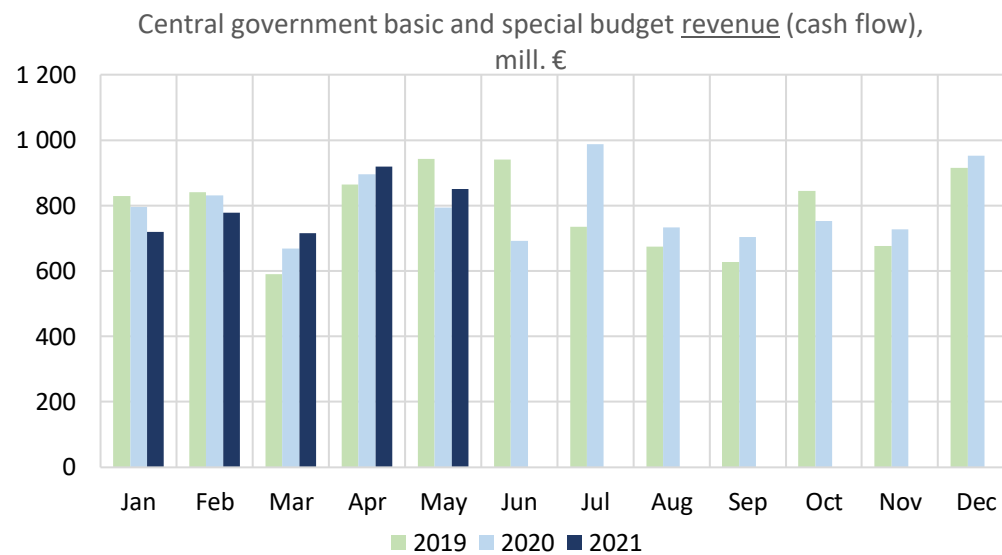
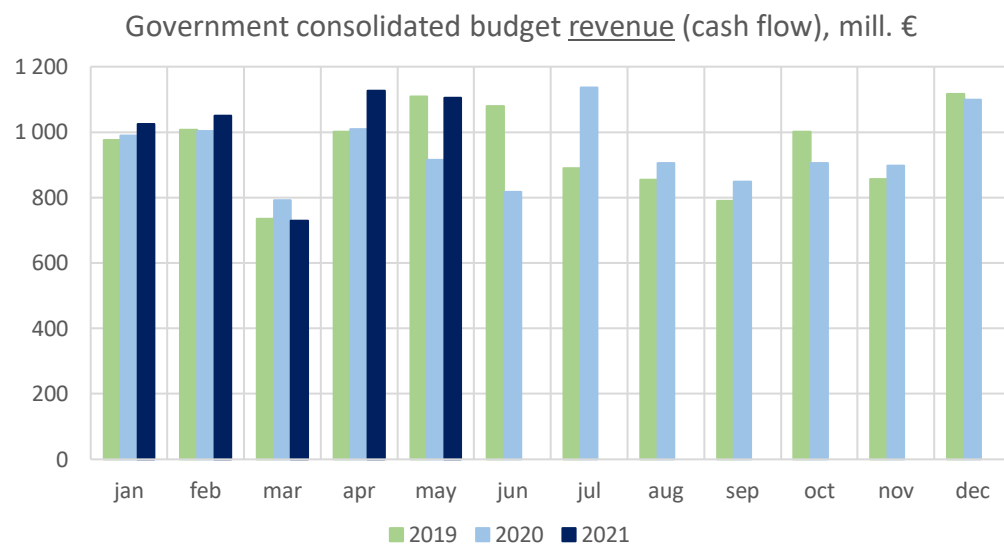
Central government basic and special budget balance (cash flow), %  
of GDP, *cummulative values, end-of-period*



## Summary of budget revenues (monthly data)

January 2019 – May 2021, million euro

Source: State Treasury



## Summary of budget expenditure (monthly data)

January 2019 – May 2021, million euro

Source: State Treasury

